

Light efficiency:

117 Lumen/Watt

Color temperature:

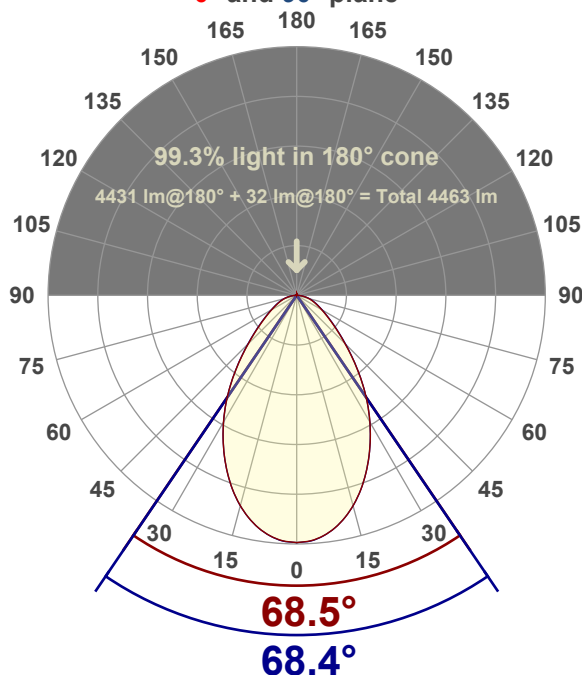
3599 K

Light quality:

CRI:83.8, R_g:92.4, R_r:83.7**P: 3 / V: - / F: -****Output: 4431 lm****Peak: 3003 cd****Power: 37.9 W****Voltage: 120 V****Current: 0.317 A****PF: 0.99****THD: 6.7 %**

Angular Distribution

0° and 90° plane



Product name:

EDGE-22-WH - 35K 40W

Test Date:

6/17/2019

Beam Angle (50% of the brightness of the centre):

68.4°

Field Angle (10% of the brightness of the centre):

126.6°

Cut Off Angle (2.5% of the brightness of the centre):

163.6°

Beam Details

*measured at centre of beam

Mounting Height (feet)/(meter)	Lux*	Footcandles*	Beam width (feet) / (meter)
4 ft / 1.2 m	2018 lx	188 fc	5.4 ft / 1.7 m
8 ft / 2.4 m	505 lx	47 fc	10.9 ft / 3.3 m
12 ft / 3.7 m	224 lx	21 fc	16.3 ft / 5 m
16 ft / 4.9 m	126 lx	12 fc	21.8 ft / 6.6 m
20 ft / 6.1 m	81 lx	8 fc	27.2 ft / 8.3 m

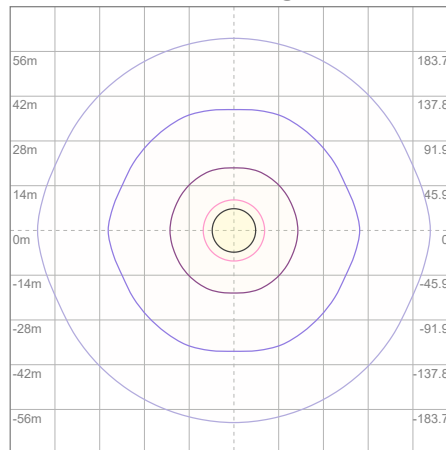
Beam center

Photometric Testing Report

Zonal Lumen Summary

Zone	Lumen	%Luminaire
0-30	1975	44.57%
0-40	2876	64.91%
0-60	3948	89.10%
60-90	483	10.90%
70-100	208	4.69%
90-120	0.000	0.00%
0-90	4431	100.00%
90-180	0.000	0.00%
0-180	4431	100.00%

ISO Lux Diagram



Lux at center:	323 lx
3%	9.69 lx
5%	16.15 lx
10%	32.30 lx
30%	96.90 lx
50%	161.50 lx

Conditions:

Number of planes: 8

Lux distribution on a surface when lamp is mounted at 3.05 meters from the surface.

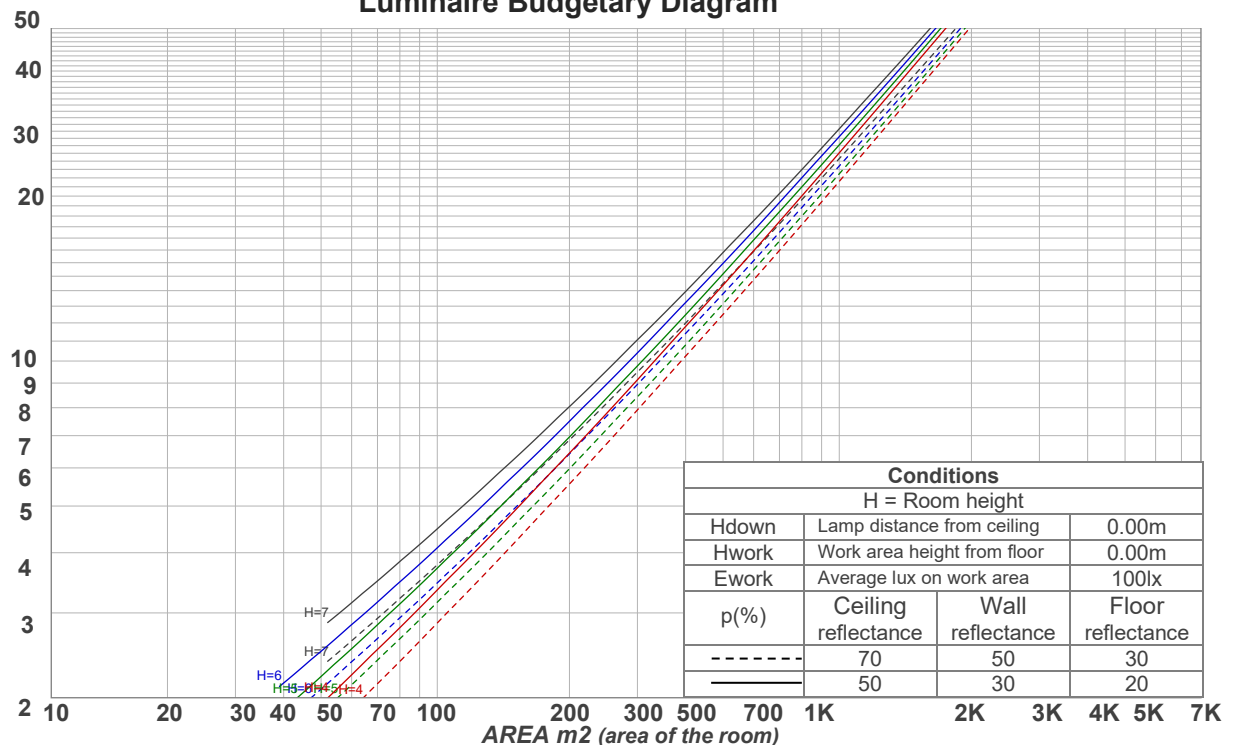
Mounting height: 3.05 meters (10 feet)

Coefficients of Utilization

Ceiling reflectance	80				70				50			30			10			0
Wall reflectance	70	50	30	10	70	50	30	10	50	30	10	50	30	10	50	30	10	0
Floor reflectance	20	20	20	20	20	20	20	20	20	20	20	20	20	20	20	20	20	0
RCR	(RCR: Room Cavity Ratio)				Room Values are expressed as percentage of Lumens delivered to the task surface													
0	119	119	119	119	116	116	116	116	111	111	111	106	106	106	102	102	102	100
1	111	107	104	100	108	105	102	99	101	98	96	97	95	93	93	92	90	88
2	103	96	91	86	100	94	89	85	91	87	83	88	84	81	85	82	79	77
3	96	87	80	75	93	85	79	74	82	77	73	80	75	72	77	74	70	68
4	89	79	71	66	87	78	71	65	75	69	65	73	68	64	71	67	63	61
5	83	72	64	59	81	71	64	58	69	63	58	67	62	57	65	61	57	55
6	78	66	58	53	76	65	58	53	64	57	52	62	56	52	60	55	51	50
7	73	61	53	48	71	60	53	48	59	52	48	57	52	47	56	51	47	45
8	68	56	49	44	67	56	49	44	55	48	44	53	48	43	52	47	43	41
9	64	53	45	40	63	52	45	40	51	45	40	50	44	40	49	44	40	38
10	61	49	42	37	60	49	42	37	48	41	37	47	41	37	46	41	37	35

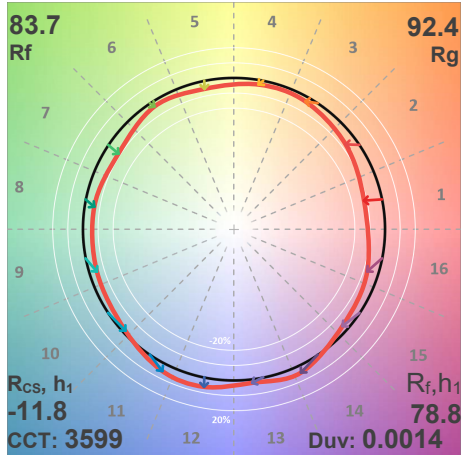
LAMPS (number of lamps)

Luminaire Budgetary Diagram

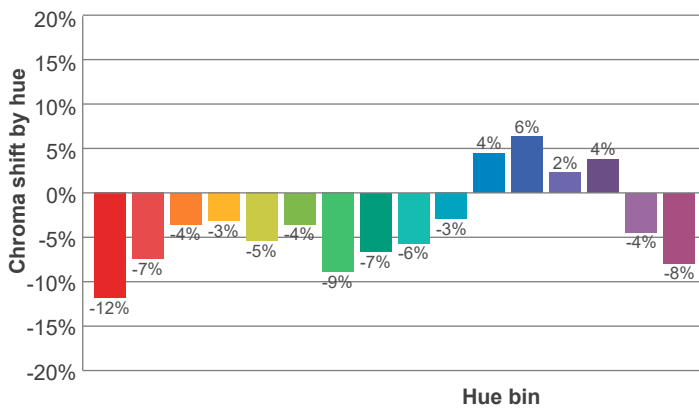
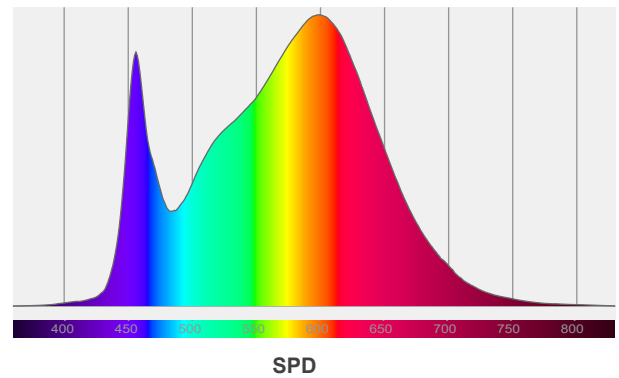
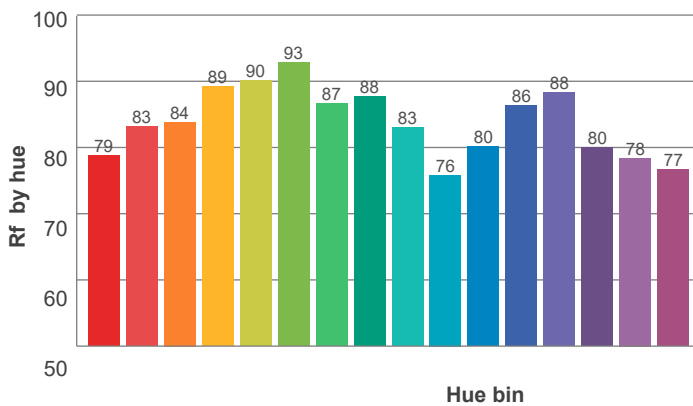
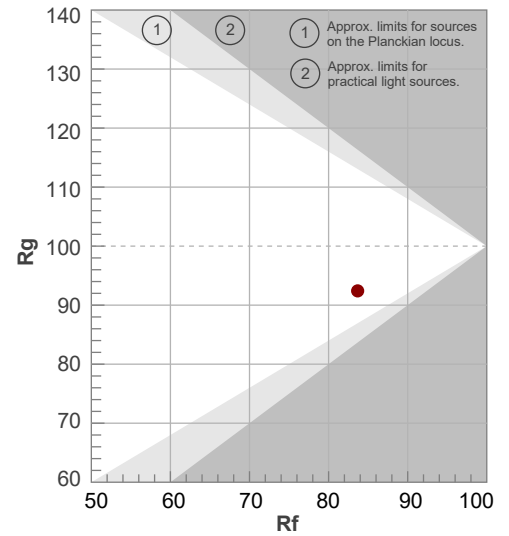


ANSI/IES TM-30-18

P: 3 / V: - / F: -



Hue Bin	R _f	Shifts (%)	
		Chroma	Hue
1	79	-12%	2%
2	83	-7%	5%
3	84	-4%	7%
4	89	-3%	3%
5	90	-5%	1%
6	93	-4%	-1%
7	87	-9%	1%
8	88	-7%	4%
9	83	-6%	10%
10	76	-3%	16%
11	80	4%	13%
12	86	6%	1%
13	88	2%	-8%
14	80	4%	-16%
15	78	-4%	-13%
16	77	-8%	-10%



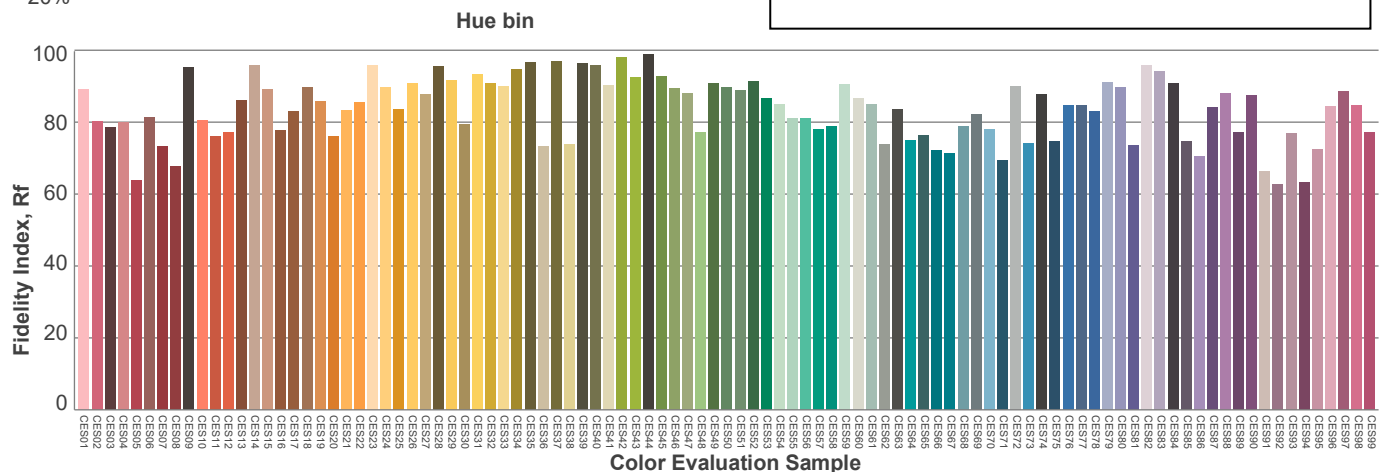
Red: 24.5%, Power=20.2mW

Blue: 14.4%, Power=39.4mW

Green: 29%, Power=54.3mW

UVA: 0.3%, Power=0.1mW

Dominant Wavelength: 581nm

1st Peak Wavelength: 593nm2nd Peak Wavelength: 604nm

Glare Evaluation According to UGR

Corrected, comprehensive UGR table according to 117-1995, S/H ratio=0.25

p Ceiling		70	70	50	50	30	70	70	50	50	30
p Walls		50	30	50	30	30	50	30	50	30	30
p Floor		20	20	20	20	20	20	20	20	20	20
Room size H = mounting height above eye level X Y		Viewing direction at right angles to lamp axis					Viewing direction parallel to lamp axis				
2H	2H	14.3	15.3	14.5	15.5	15.7	14.3	15.3	14.5	15.6	15.8
	3H	15.2	16.2	15.6	16.4	16.6	15.2	16.2	15.6	16.5	16.7
	4H	15.6	16.6	16.0	16.9	17.1	15.7	16.7	16.1	16.9	17.2
	6H	16.1	16.9	16.4	17.2	17.6	16.1	17.0	16.5	17.3	17.7
	8H	16.2	17.0	16.5	17.3	17.7	16.3	17.1	16.6	17.4	17.8
	12H	16.3	17.1	16.6	17.4	17.8	16.3	17.1	16.7	17.5	17.9
4H	2H	14.6	15.6	15.0	15.8	16.1	14.6	15.6	15.0	15.9	16.1
	3H	15.8	16.6	16.2	17.0	17.4	15.9	16.7	16.2	17.0	17.4
	4H	16.4	17.1	16.8	17.5	18.1	16.4	17.1	16.8	17.6	18.1
	6H	16.9	17.6	17.4	18.0	18.3	16.9	17.7	17.4	18.0	18.4
	8H	17.1	17.8	17.6	18.1	18.5	17.1	17.8	17.6	18.1	18.5
	12H	17.2	17.7	17.7	18.2	18.6	17.2	17.8	17.7	18.2	18.7
8H	4H	16.6	17.3	17.1	17.6	18.0	16.6	17.3	17.1	17.7	18.0
	6H	17.3	17.8	17.8	18.2	18.8	17.3	17.8	17.8	18.3	18.8
	8H	17.6	18.0	18.1	18.5	19.2	17.6	18.0	18.1	18.5	19.2
	12H	17.8	18.1	18.3	18.6	19.2	17.8	18.1	18.4	18.6	19.2
12H	4H	16.6	17.2	17.1	17.6	18.0	16.6	17.2	17.1	17.6	18.1
	6H	17.4	17.8	17.9	18.3	18.9	17.4	17.8	17.9	18.3	19.0
	8H	17.7	18.0	18.2	18.5	19.1	17.7	18.0	18.3	18.5	19.1
Variation of the observer position for the luminaire distance S											
S = 1.0H		0.2 / -0.3					0.2 / -0.3				
S = 1.5H		0.6 / -0.6					0.6 / -0.6				
S = 2.0H		1.1 / -0.9					1.2 / -0.9				
Corrected glare indices referring to 4431 lm total luminous flux											

IESNA TM-15-07

**Luminaire Classification System
For Outdoor Luminaires**

BUG rating
B2 U0 G1

UL 90-100°

0 lm
0%

BVH 80-90°

23.2 lm
0.5%

BH 60-80°

218.7 lm
4.9%

BM 30-60°

986.7 lm
22.1%

BL 0-30°

986.8 lm
22.1%

UH 100-180°

0 lm
0%

UL 90-100°

0 lm
0%

FVH 80-90°

23.2 lm
0.5%

FH 60-80°

218.7 lm
4.9%

FM 30-80°

986.7 lm
22.1%

FL 0-30°

986.8 lm
22.1%

